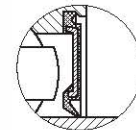
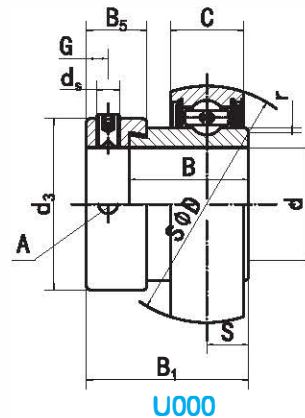
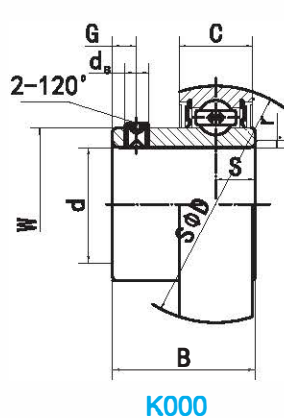


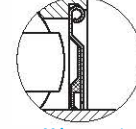
Minature Bearing Housing Inserts

K000 (Light-duty)
U000 (Light-duty)

Ball Bearings



J type seal
(Standard)



H type seal
(Optional)

| Bearing NO. | Dimensions (mm / in.) | | | | | | | | Dynamic load ratings (N) | Static load ratings (N) | Weight (kg) |
|-----------------|-------------------------|--------------|---------------|-------------|-----|--------------|--------------|---------|--------------------------|-------------------------|-------------|
| | d | D | B | C | r | S | G | ds | | | |
| K000 SS-K000 | 10 | 26 1.0236 | 14 0.551 | 8 0.315 | 0.5 | 4.0 0.157 | 3.0 0.118 | M3X0.35 | 4606 3685 | 1906 1620 | 0.02 |
| K001 SS-K001 | 12 | 28 1.1024 | 14.5 0.571 | 8 0.315 | | 4.0 0.157 | 3.0 0.118 | M3X0.35 | 5096 4077 | 2401 2041 | 0.03 |
| K002 SS-K002 | 15 | 32 1.2598 | 16.5 0.65 | 9 0.354 | | 4.5 0.177 | 3.5 0.138 | M4X0.5 | 4606 3685 | 1906 1620 | 0.05 |
| K003 SS-K003 | 17 | 35 1.3779 | 17.5 0.689 | 10 0.394 | | 5.0 0.197 | 3.5 0.138 | M4X0.5 | 5978 4782 | 3284 2791 | 0.05 |
| K004 SS-K004 | 20 | 42 1.6535 | 21 0.827 | 12 0.472 | 1.0 | 6.0 0.236 | 4.0 0.157 | M5X0.5 | 9359 7487 | 5047 4290 | 0.09 |
| K005 SS-K005 | 25 | 47 1.8504 | 22.5 0.886 | 12 0.472 | 1.0 | 6.0 0.236 | 4.5 0.177 | M5X0.5 | 10094 8075 | 5831 4956 | 0.10 |
| K006 SS-K006 | 30 | 55 2.1653 | 24.5 0.965 | 13 0.512 | 1.5 | 6.5 0.256 | 5.0 0.197 | M5X0.5 | 13230 10584 | 8281 7039 | 0.15 |

| Bearing NO. | Dimensions (mm / in.) | | | | | | | | | | | Dynamic load ratings (N) | Static load ratings (N) | Weight (kg) |
|-----------------|-------------------------|--------------|----------------|----------------|----------------|-----|--------------|----------------|----------------|--------------|---------|--------------------------|-------------------------|-------------|
| | d | D | B ₁ | B | C | r | S | B ₅ | d ₃ | A | ds | | | |
| U000 SS-U000 | 10 | 26 1.0236 | 17.5 0.6890 | 11.0 0.4330 | 8.0 0.3150 | 0.5 | 4.0 0.157 | 8.5 0.335 | 17.0 0.669 | 3.5 0.138 | M4X0.7 | 4606 3685 | 1906 1620 | 0.03 |
| U001 SS-U001 | 12 | 28 1.1024 | 17.5 0.6890 | 11.0 0.4330 | 8.0 0.3150 | | 4.0 0.157 | 8.5 0.335 | 19.0 0.748 | 3.5 0.138 | | 5096 4077 | 2401 2041 | 0.04 |
| U002 SS-U002 | 15 | 32 1.2598 | 18.5 0.7280 | 12.0 0.4720 | 9.0 0.3540 | | 4.5 0.177 | 8.5 0.335 | 22.0 0.866 | 3.5 0.138 | | 4606 3685 | 1906 1620 | 0.05 |
| U003 SS-U003 | 17 | 35 1.3779 | 20.5 0.8070 | 13.5 0.5310 | 10.0 0.3940 | | 5.0 0.197 | 9.5 0.374 | 25.0 0.984 | 3.5 0.138 | | 5978 4782 | 3284 2791 | 0.06 |
| U004 SS-U004 | 20 | 42 1.6535 | 24.5 0.9640 | 16.5 0.6500 | 12.0 0.4720 | 1.0 | 6.0 0.236 | 11.0 0.433 | 30.0 1.181 | 5.0 0.197 | M5X0.8 | 9359 7487 | 5047 4290 | 0.10 |
| U005 SS-U005 | 25 | 47 1.8504 | 25.5 1.0040 | 17.5 0.6890 | 12.0 0.4720 | | 6.0 0.236 | 12.0 0.472 | 36.0 1.417 | 5.0 0.197 | | 10094 8075 | 5831 4956 | 0.14 |
| U006 SS-U006 | 30 | 55 2.1653 | 26.5 1.0430 | 18.5 0.7280 | 13.0 0.5120 | | 6.5 0.256 | 12.0 0.472 | 42.0 1.653 | 5.0 0.197 | | 13230 10584 | 8281 7039 | 0.19 |
| U007 SS-U007 | 35 | 62 2.4400 | 29.5 1.1610 | 20.0 0.7870 | 14.0 0.5510 | 1.5 | 7.0 0.276 | 13.5 0.531 | 48.0 1.889 | 5.0 0.197 | M6X0.75 | 15920 12736 | 10290 8747 | 0.25 |

Add Prefix SS for Stainless Steel (AISI420)